



SUPPLIER:
SunEarth, Inc.
 8425 Almeria Avenue
 Fontana, CA 92335 USA
 www.sunearthinc.com

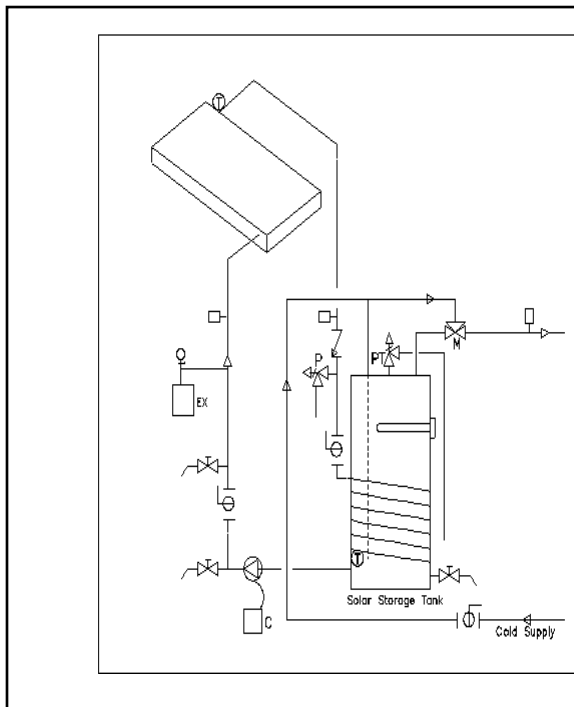
CERTIFIED SOLAR SYSTEM

BRAND: SOLARAY
 MODEL: TE40P-80-1
 SYSTEM TYPE: Pumped, Indirect
 CERTIFICATION #: 1993001C
 Original Certification: March 23, 1993
 Expiration Date: January 05, 2021

The solar system listed below has been evaluated by the Solar Rating & Certification Corporation™ (SRCC™) in accordance with SRCC OG-300, Operating Guidelines for Certifying Solar Water Heating Systems, and has been certified by the SRCC. This award of certification is subject to all terms and conditions of the Program Agreement and the documents incorporated therein by reference.

Description: Glazed Flat Plate, Differential, -51 °C -60 °F, Non-GRAS, UL listed electric tank, Fluid, Heat dump

| Single-day Rating | | SINGLE DAY RATING CONDITIONS | SI Units | Inch-Pound Units |
|---|-----------------------------------|-------------------------------------|------------------------------|--------------------------------|
| Solar Energy Factor (SEF _D) | Solar Fraction (SF _D) | System Set Temperature | 57.2 °C | 135 °F |
| 2.20 | 0.59 | Environmental Temperature | 19.7 °C | 67.5 °F |
| Single-day Rating Conditions: SEF _D = Solar Energy Factor (info link) SF _D = Solar Fraction (info link) | | Ambient Temperature Profile Average | 14.4 °C | 58 °F |
| | | Water Mains Temperature | 14.4 °C | 58 °F |
| | | Delivered Load | 43.3 MJ/day | 41,045 Btu/day |
| | | Solar Irradiance | 4,733 Wh/m ² -day | 1,500 Btu/ft ² -day |



| Storage Tank(s) | |
|---|----------------------|
| Solar Tank Vol (l) | Solar Tank Vol (gal) |
| 303 | 80 |
| Approximate Collector Area: 3.8 m ² , 40.9 ft ² | |

The solar water system listed here has been certified by the SRCC as meeting the minimum standards for testing, installation, operation, maintenance, performance, reliability and safety as specified in SRCC Document OG-300. Thermal performance ratings are based on the successful durability and performance testing of a sample collector, where said tests have been conducted by an independent laboratory approved and listed by the SRCC. The system has been modeled using the computer simulation program TRNSYS to calculate the ratings.

Before the Supplier can make any change in design, materials, specifications, parts, or construction, the change(s) must be reported to the SRCC for evaluation of continued certification.

REMARKS:

Jen Higgins

Technical Director





CERTIFIED SOLAR SYSTEM

SUPPLIER:
SunEarth, Inc.
 8425 Almeria Avenue
 Fontana, CA 92335 USA
 www.sunearthinc.com

BRAND: SOLARAY
 MODEL: TE40P-80-1
 SYSTEM TYPE: Pumped, Indirect
 CERTIFICATION #: 1993001C
 Original Certification: March 23, 1993
 Expiration Date: January 05, 2021

The solar system listed below has been evaluated by the Solar Rating & Certification Corporation™ (SRCC™) in accordance with SRCC OG-300, Operating Guidelines for Certifying Solar Water Heating Systems, and has been certified by the SRCC. This award of certification is subject to all terms and conditions of the Program Agreement and the documents incorporated therein by reference.

| Annual Ratings in AZ-TUCSON | | | Annual Rating using hourly weather data for the chosen city: SEF _A = Solar Energy Factor (info link) SF _A = Solar Fraction (info link) Energy Savings = Estimated annual energy saved compared to a conventional water heater using the same type of backup |
|---|-----------------------------------|----------------------|--|
| Solar Energy Factor (SEF _A) | Solar Fraction (SF _A) | Energy Savings (kWh) | |
| 5.20 | 0.83 | 3030 | |

Only the following options for the collector array are approved:

| Option | Collector Panel Manufacturer | Collector Panel Request Number | Collector Panel Model Number | Collector Panel Name | Quantity | Total Panel area(m ²) | Total Panel area(ft ²) |
|--------|------------------------------|--------------------------------|------------------------------|----------------------|----------|-----------------------------------|------------------------------------|
| 1 | SunEarth, Inc. | 2007032A | EP-40 / EP-40-0.75 | Empire | 1 | 3.80 | 40.9 |

